

**SOCIAL AND RELIGIOUS
STUDIES
PSRS**

12/07/2021 1.30pm - 3.30pm



NESAS NATIONAL EXAMINATION AND
SCHOOL INSPECTION
AUTHORITY

Pupil's complete index number

Province /City	District	Sector	School	Level	Pupil	Year
<input type="text"/>	<input type="text"/>	<input type="text"/>	<input type="text"/>	<input type="text"/>	<input type="text"/>	<input type="text"/>

Pupil's names

Surname:

Other names:

NB: PUPIL'S INDEX NUMBER AND NAMES
MUST BE WRITTEN AS THEY APPEAR ON
THE REGISTRATION FORM

PRIMARY LEAVING NATIONAL EXAMINATIONS, 2021

SOCIAL STUDIES

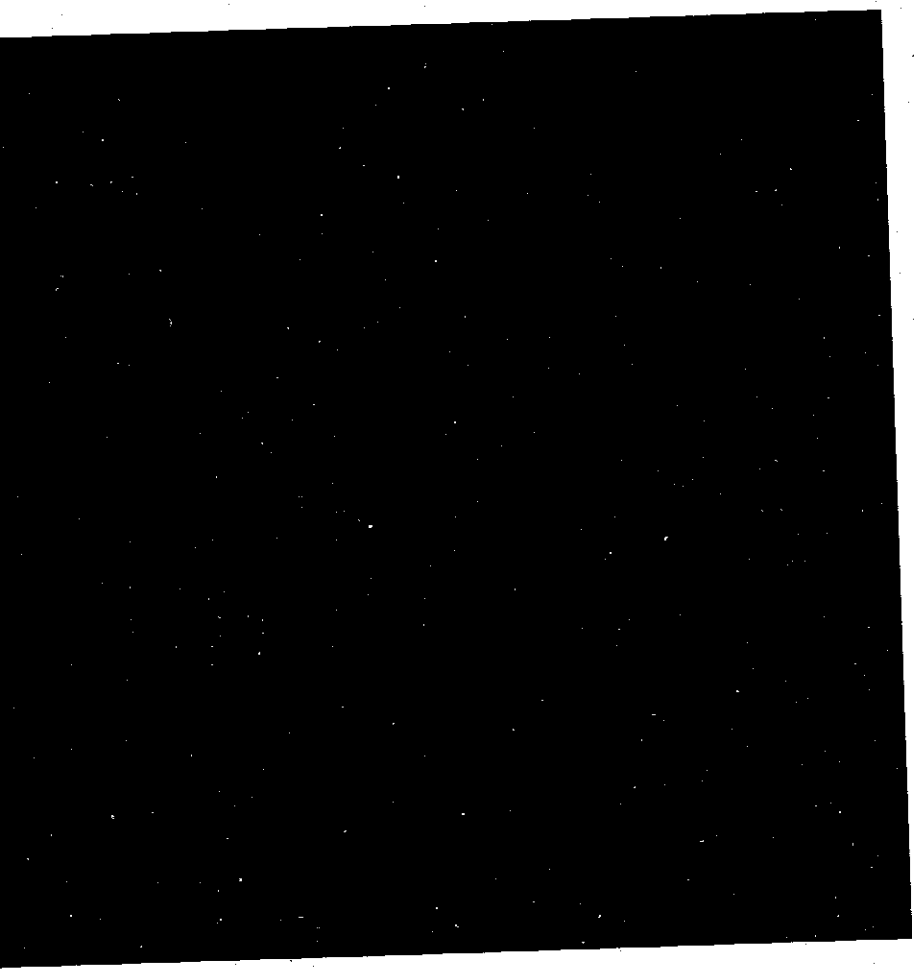
Duration: Two hours

Marks:

/100

INSTRUCTIONS

- 1) Don't open this question paper until you are told to do so.
- 2) This paper consists of **8** pages and **48** questions. Before starting, check if all pages and all questions are there and are arranged in order.
- 3) All questions are compulsory and must be answered as instructed.
- 4) Read each question carefully before answering it.
- 5) Answer the questions in the space provided on this question paper.
- 6) You must use a **blue** or **black** pen.



ATTEMPT ALL QUESTIONS (100 MARKS)

1. a) State two elements of a good map.
i)..... (1mark)
ii)..... (1mark)
b) Explain the use of scale on a map?
..... (1mark)
2. Describe two different ways which show that there is unity and co-operation among people.
a) (1mark)
b) (1mark)
3. In which two ways does COMESA benefit its member states?
a) (1mark)
b) (1mark)
4. Mention any two forms of communication used to send messages to distant places in the shortest possible time.
a) (1mark)
b) (1mark)
5. Give the importance of non-governmental organizations like Save the Children, Care, and World Vision in the development of your country.
..... (1mark)
6. Suggest any two causes of criminal behaviour in society.
a)..... (1mark)
b)..... (1mark)
7. Explain the functions of Judiciary as an organ of the government.
a) (1mark)
b) (1mark)
8. Why do you think elections and democracy are important in your country?
a) (1mark)
b) (1mark)
9. Mention two uses of public places and assets in Rwanda.
a) (1mark)
b) (1mark)

10. State any two effects of climate change in Africa. (1mark)
- a)
- b) (1mark)
11. List two different types of budgets used in your country. (1mark)
- a)
- b) (1mark)
12. Suggest any two reasons that might make it difficult for a country to develop. (1mark)
- a)
- b) (1mark)
13. Give any two major economic activities in Rwanda. (1mark)
- a)
- b) (1mark)
14. Explain any two ways in which the government spends its money. (1mark)
- a)
- b) (1mark)
15. Why is it important to protect natural resources in your country? (1mark)
- a)
- b) (1mark)
16. Give two reasons to explain why people move from one place to another? (1mark)
- a)
- b) (1mark)
17. Explain any two disadvantages of Air transport. (1mark)
- a)
- b) (1mark)
18. Give two ways in which transport and communication networks are important in East Africa. (1mark)
- a)
- b) (1mark)
19. Give two examples of the impact of missionary activity in East Africa. (1mark)
- a)
- b) (1mark)
20. Explain two roles of a school in maintaining peace. (1mark)
- a)
- b) (1mark)

21. Suggest two causes of disharmony in your country.
- a) (1mark)
- b) (1mark)
22. Give two symptoms of HIV/AIDS.
- a) (1mark)
- b) (1mark)
23. Identity two ways of keeping personal hygiene.
- a) (1mark)
- b) (1mark)
24. Explain the meaning of two of the colours found in the National Flag of Rwanda.
- a) (1mark)
- b) (1mark)
25. Write in full the following abbreviations:
- a) IMF (1mark)
- b) ILO (1mark)
26. Give two examples of banks in Rwanda.
- a) i)..... (1mark)
- ii)..... (1mark)
- b) Which bank is responsible for printing new notes and coins? (1mark)
-
27. Identify any two examples of social services in your country.
- a) (1mark)
- b) (1mark)
28. a) Give two differences between informal education and formal education.
- (i) (1mark)
- (ii) (1mark)
- b) Explain the importance of education in your country. (1mark)
-

29. Explain the following terms related to forest conservation.

- a) Afforestation..... (1mark)
- b) Re-afforestation..... (1mark)

30. Mention the uses of the following instruments.

- a) Anemometer..... (1mark)
- c) Hygrometer..... (1mark)

31. Explain two reasons why the government carries out population census.

- a) (1mark)
- b) (1mark)

32. a) Give two reasons to explain why it is good to control population growth in your country.

- (i) (1mark)
- (ii) (1mark)

b) An area of 6 00 km² has a population of 84 000. Find the population density of the area.

(1mark)

33. Explain the responsibilities and main duties of the government.

- a) (1mark)
- b) (1mark)

34. Explain two dangers of poor hygiene of private body parts.

- a)..... (1mark)
- b)..... (1mark)

35. Suggest two ways in which dairy farming can be improved in Rwanda.

- a)..... (1mark)
- b)..... (1mark)

36. Mention any two major imports that Rwanda gets from abroad.

- a)..... (1mark)
- b)..... (1mark)

37. State the two months of the year when the sun is overhead on the Equator
- a)..... (1mark)
- b)..... (1mark)
38. a) What is meant by the following terms
- (i) colony (1mark)
- (ii) protectorate..... (1mark)
- b) Mention two qualities of a good leader.
- (i)..... (1mark)
- (ii) (1mark)
39. Give two reasons to explain why some Africans collaborated with colonialists.
- a)..... (1mark)
- b)..... (1mark)
40. Mention any two economic activities carried out by early man during the Stone Age period.
- a)..... (1mark)
- b)..... (1mark)
41. Give two reasons for the coming of foreigners to Africa in the 19th century.
- a)..... (1mark)
- b)..... (1mark)
42. Two problems that can be caused by a large population to your country are:
- a)..... (1mark)
- b)..... (1mark)
43. State one thing which archaeologists used to keep the activities of people who lived in prehistoric times.
- (1mark)
44. Give two problems faced by explorers in Africa.
- a)..... (1mark)
- b)..... (1mark)
45. State two ways in which the teachings of Islam are similar to those of Christianity.
- a)..... (1mark)
- b)..... (1mark)

46. **EITHER** Give two ways why the Bible is seen as the word of God?

a)..... (1mark)

b)..... (1mark)

OR: Explain any two factors to show the significance of belief in the oneness of God (Allah)

a)..... (1mark)

b)..... (1mark)

47. **EITHER** Give two reasons why Christians take part in the Holy Communion

a)..... (1mark)

b)..... (1mark)

OR: Mention the people who are exempted from fasting during the month of Ramadan.

a)..... (1mark)

b)..... (1mark)

48. **EITHER:** Give reasons why children should take part in church activities.

a)..... (1mark)

b)..... (1mark)

OR:

a) What is the name of the cave where revelation of Holy Qur'an started?

..... (1mark)

b) How many verses are there in the Qur'an?

..... (1mark)